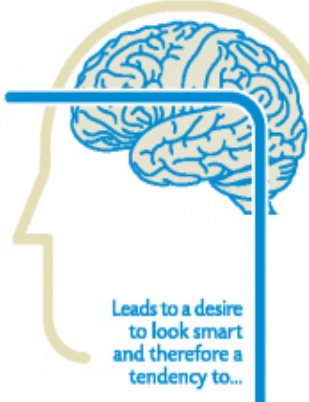


# FIXED

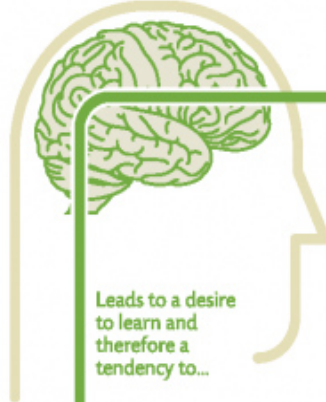
# GROWTH

**Fixed Mind-set**  
Intelligence is static



Leads to a desire to look smart and therefore a tendency to...

**Growth Mind-set**  
Intelligence can be developed



Leads to a desire to learn and therefore a tendency to...

## CHALLENGES

...avoid challenges

...embrace challenges

## OBSTACLES

...give up easily

...persist in the face of setbacks

## EFFORT

...see effort as fruitless or worse

...see effort as the path to mastery

## CRITICISM

...ignore useful negative feedback

...learn from criticism

## SUCCESS OF OTHERS

...feel threatened by the success of others

...find lessons and inspiration in the success of others

As a result, they may plateau early and achieve less than their full potential.

All this confirms a **deterministic view of the world.**

As a result, they reach ever-higher levels of achievement.

All this gives them a **greater sense of free will.**